



STATE ROUTE 79 REALIGNMENT

Riverside County Transportation Commission
Anne Mayer, Executive Director

Winchester – Homeland Municipal Advisory Council

April 13, 2017





Project Location



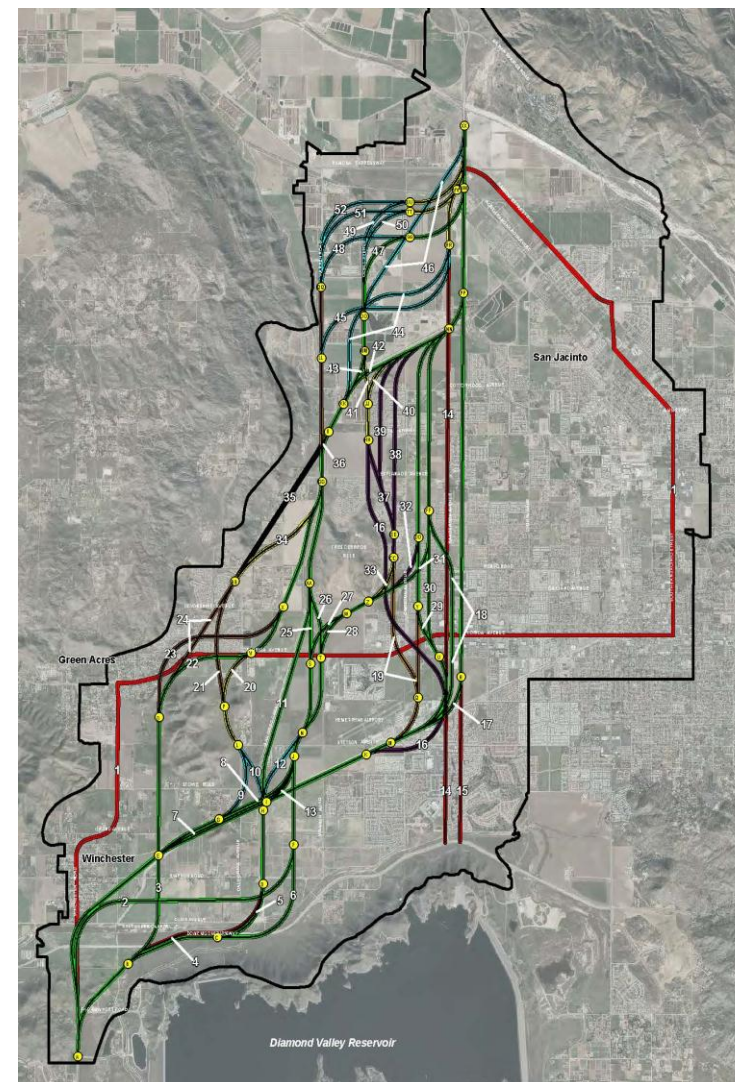
- Cities of San Jacinto, Hemet, the community of Winchester and the county of Riverside
- Realign SR -79 from Gilman Springs Road to Domenigoni Parkway





Project Timeline

- **2002-2008** - Field Studies & Technical Reports
 - Many alignments studied
 - Eastern alignments eliminated due to biological concerns
- **2013** - Circulated Draft EIR/EIS
- **2015** - Re-circulate portions of the Draft EIR/EIS
- **2016** – PA & ED approved and Record of Decision issued
- **2017** – In January, RCTC Adopted Responsible Agency findings Pursuant to CEQA





Project Benefits

- Improve Traffic Flow
- Improve Operational Efficiency
- Enhance Safety
- Allow regional traffic to bypass local roads
- Reduce the diversion of traffic from state routes to local roads



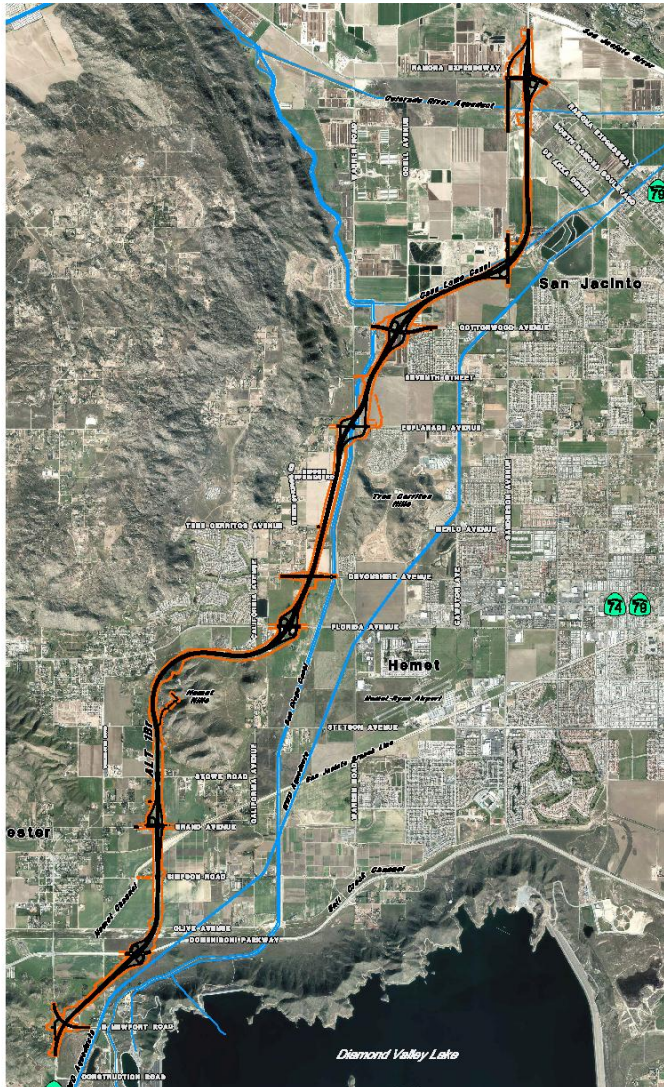


Highway or Expressway?

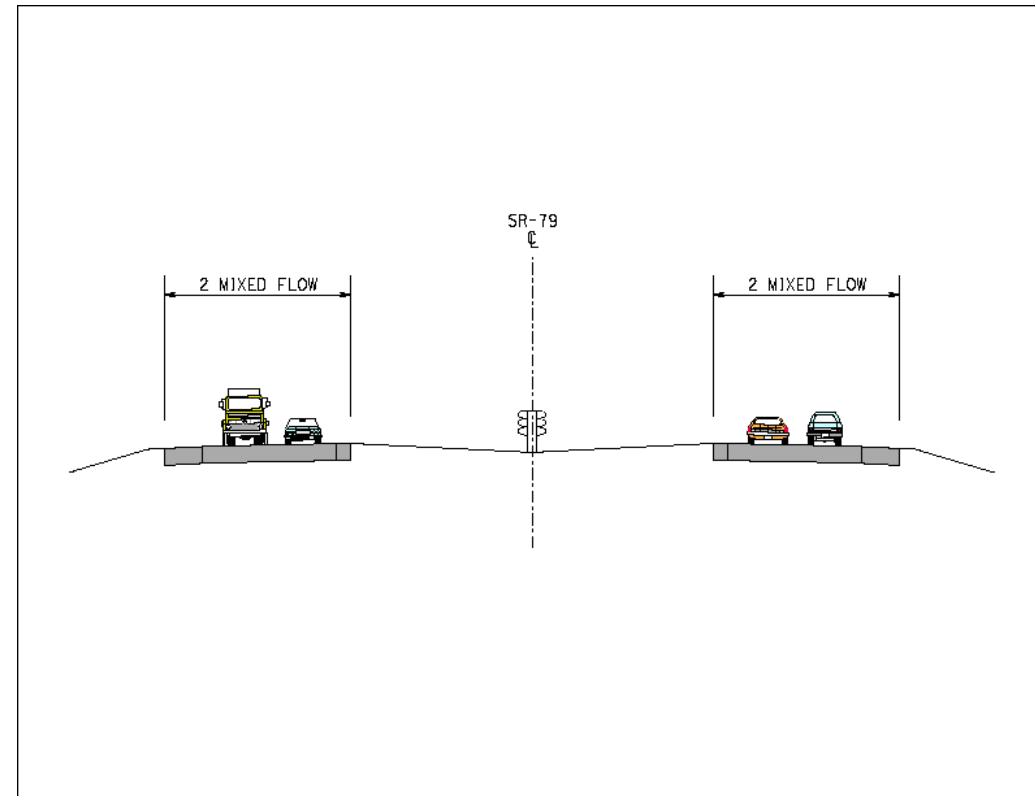
- The SR 79 project will be a four lane limited access expressway.
- An expressway is an arterial highway which may have partial control of access, but may or may not be divided or have grade separations at intersections.
- A highway is a general term denoting a public way for the transportation of people, goods, materials and services but is primarily for vehicular travel.



Selected Alignment



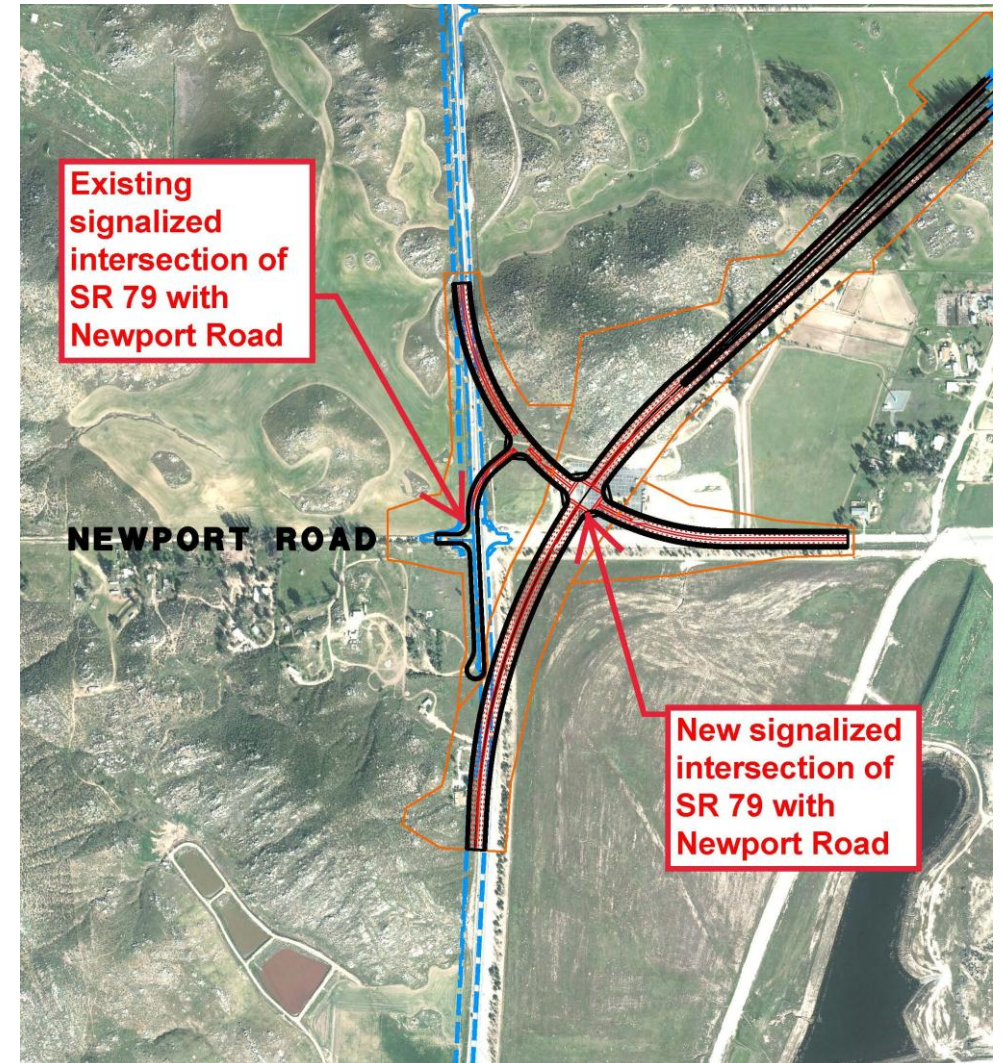
Alternative 1br





SR 79 improvements near Newport Road

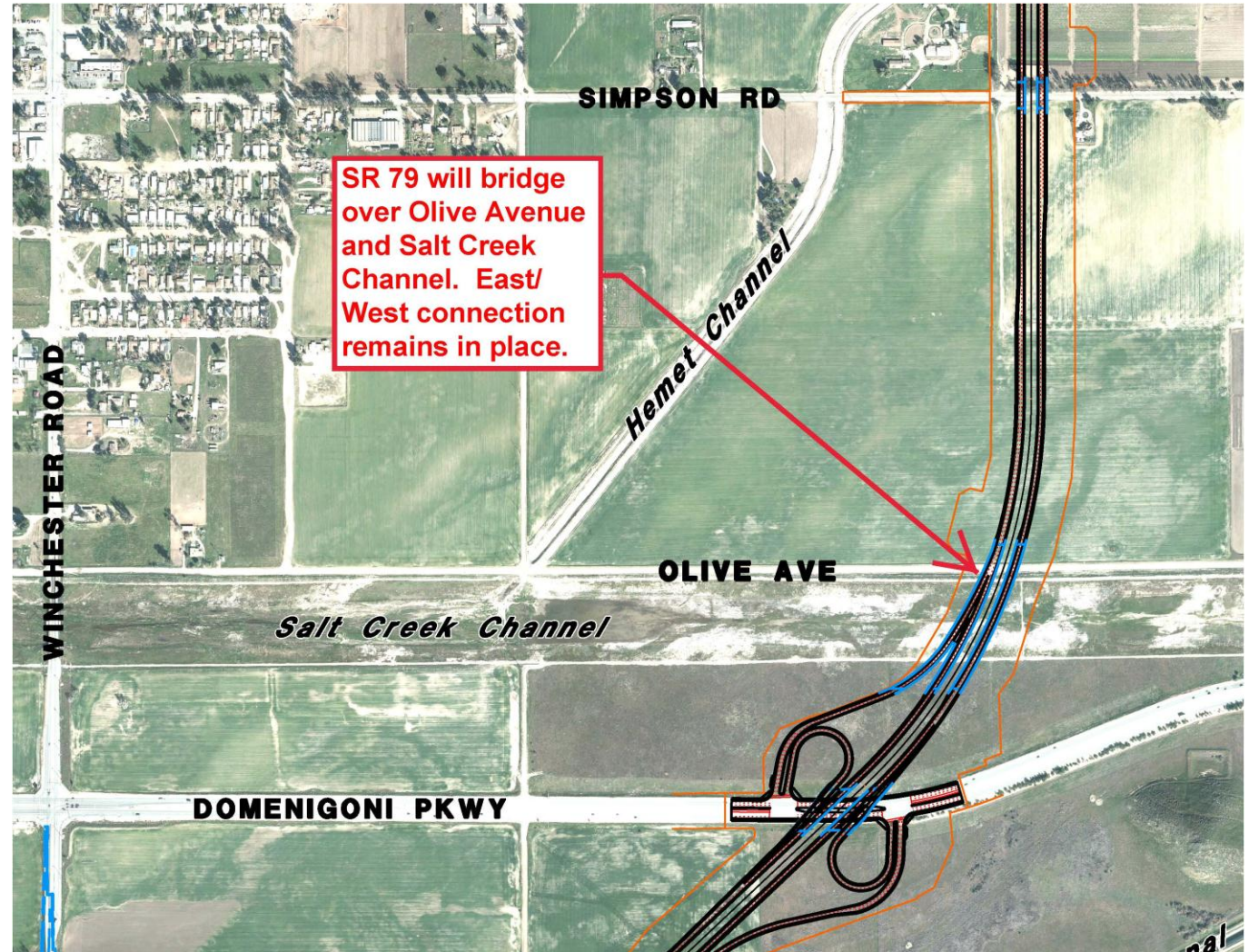
- This project ties into the improvements completed on SR 79 a few years ago.
- New Newport Road intersection will be realigned to the east of the existing intersection.
- Connection to Newport Road and Winchester Road will continue to exist with project improvements





SR 79 improvements near Olive Ave and Simpson Road

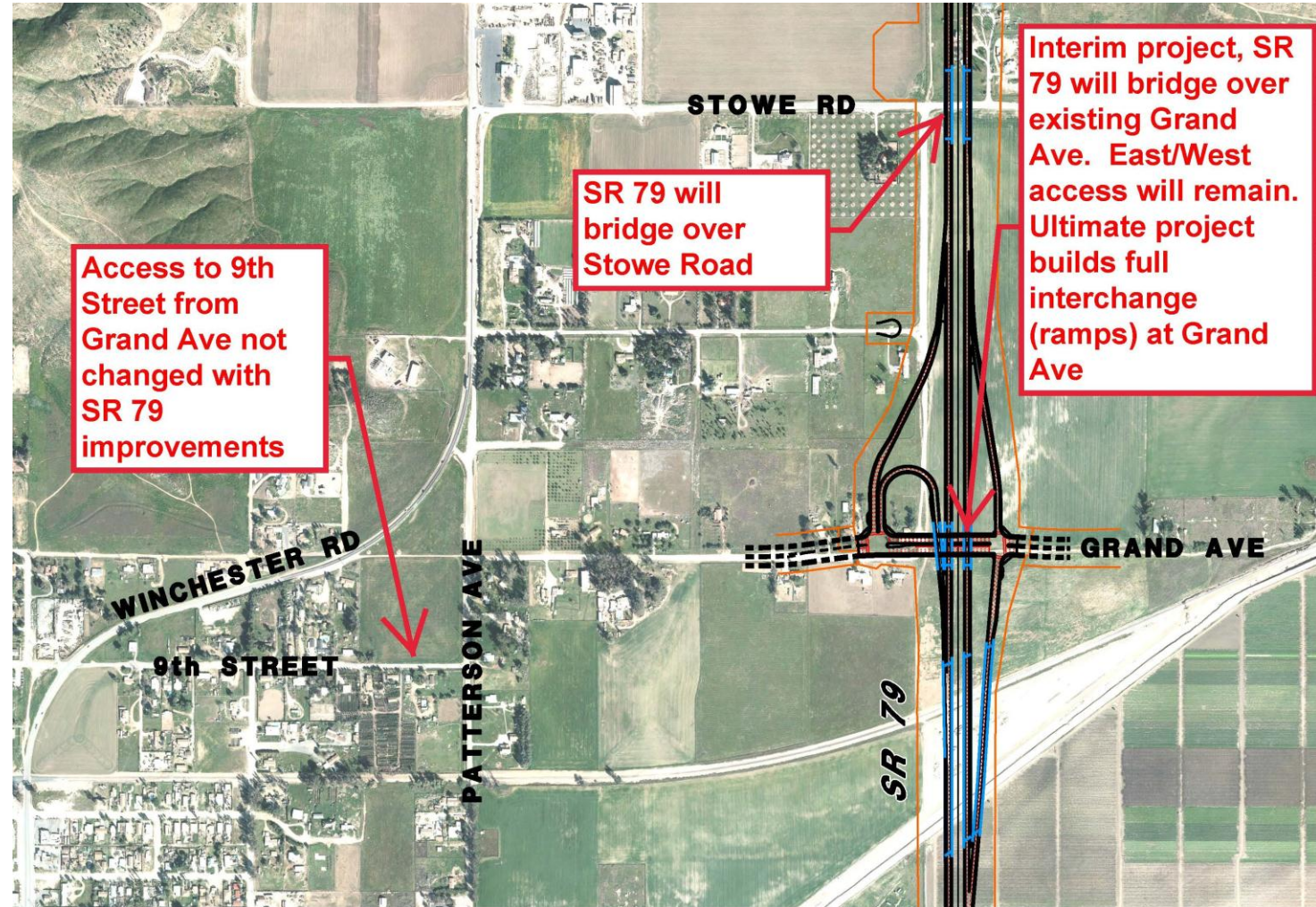
- SR 79 will bridge over Olive Ave and Simpson Road.
- East/West access of these roads will remain.
- No direct access to SR 79





SR 79 improvements near Grand Ave and Stowe Road

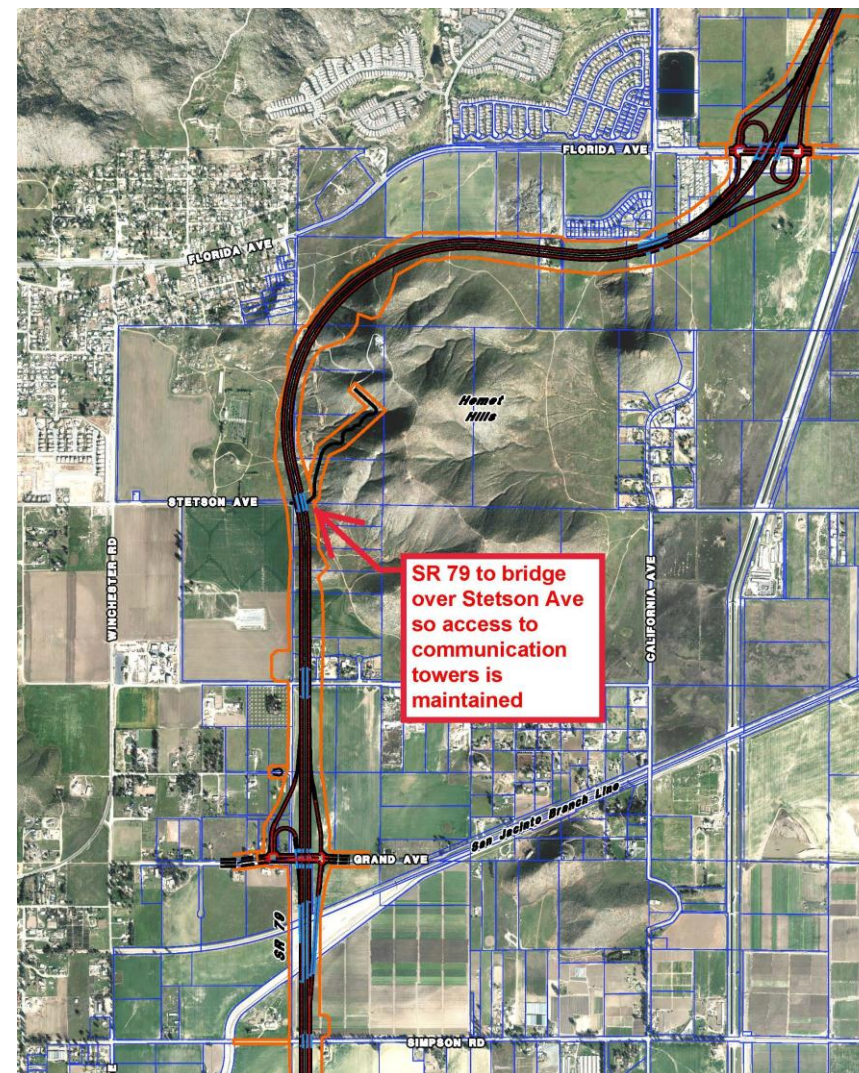
- SR 79 will bridge over Grand Ave in interim phase.
- Full interchange at Grand Ave at buildout.
- SR 79 bridge over Stowe Rd, no direct access.





Winchester: Access Overview

- Alignment modification west of Hemet Hills
- Avoids impacts to communication towers
- Reduces cut through Hemet Hills





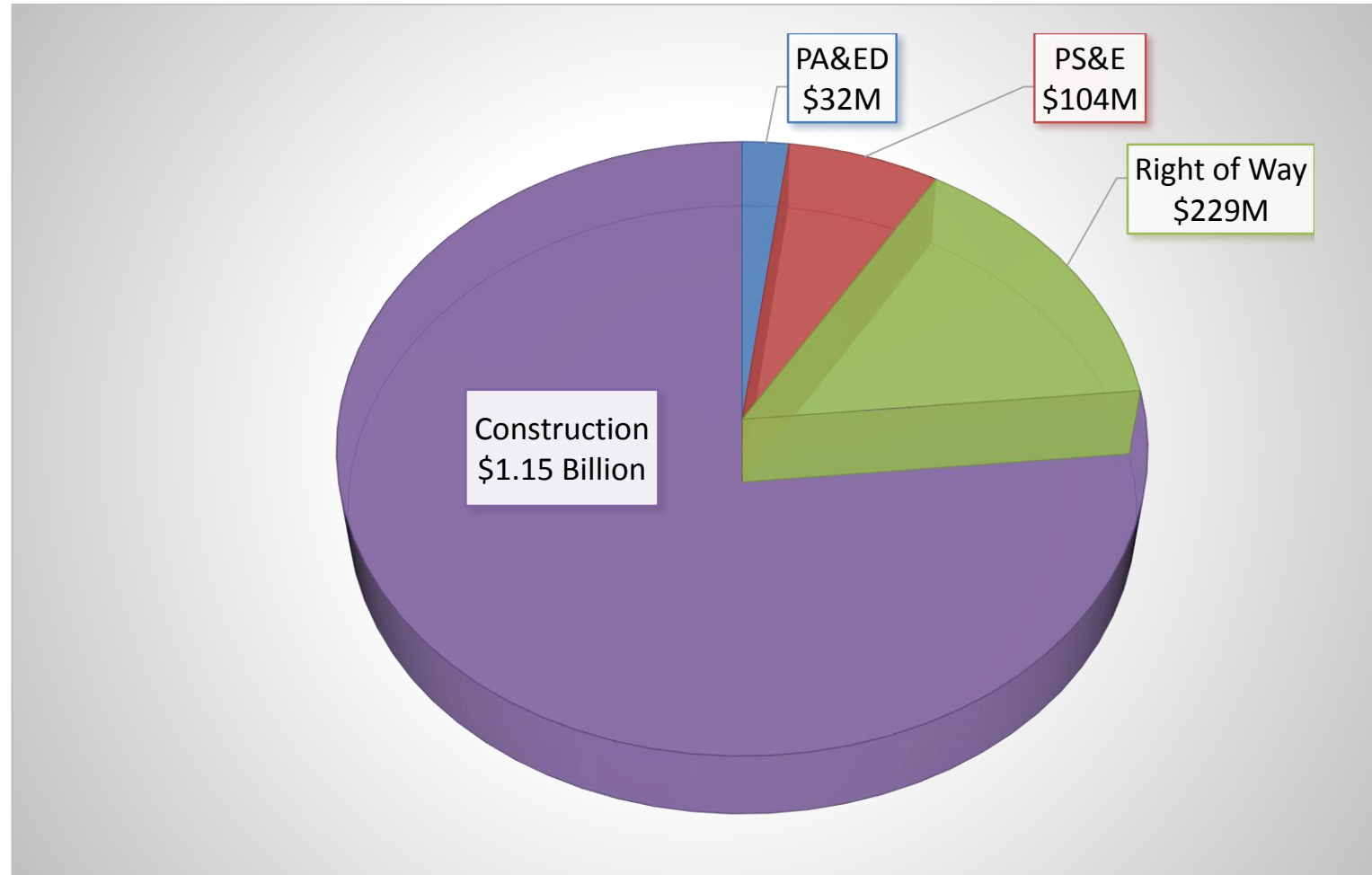
Elevation of SR 79 at critical locations

- The SR 79 alignment will bridge over major east/west roads.
- Height of Bridge above existing ground:
 - Domenigoni Pkwy ~ 28.5'
 - Olive Ave ~ 28.5'
 - Simpson Rd ~ 27'
 - Grand Ave ~ 30'
 - Stowe Rd ~ 36'





Estimated Project Costs



Total Project Cost = \$1.52 Billion



Next Steps

- Identify funding for the project





Questions/Comments

Stay Connected:

www.sr79project.info

